



**NAI S**  
c o s m e t i c s

PRODUCT CATALOG



**NAILS COSMETICS** is a rapidly growing professional nail beauty brand in latvia and europe. Combining many years of experience and knowledge, NAILS COSMETICS ersistently discovers new worlds in the manicure industry.

Our focus is on the customers because their unique experience is our driving force to create scientifically advanced products and achieve the highest professional excellence. Due to the synergy between the client and the expert team of NAILS COSMETICS, we have created innovative products and discovered new professional horizons.

The cornerstone of NAILS COSMETICS development is the creation of a wide range of products - from basic nail beauty products to design systems. Products are characterized by quality and durability which helps to build an emotional connection with the user. We strive to make the work of each specialist easier, faster, and simpler, giving them room to thrive and discover their unique signature in the process.

We believe that you can do anything, and by using NAILS COSMETICS products, you get excellent results.

**NAILS COSMETICS OFFICE:**

20A E.BIRZNIEKA UPISA STREET, RIGA, LV1050  
**NAISOFISS@GMAIL.COM**

**NAILS COSMETICS ONLINE STORE:**  
WWW.NAILSCOSMETICS.LV

NAISKONSULTANTS@GMAIL.COM  
**+371 20446646**

**NAILS COSMETICS STORE | RIGA:**  
M-F 9.00-18.00

20A E.BIRZNIEKA UPISA STREET, RIGA, LV1050  
**+371 20004655**

**NAILS COSMETICS STORE | LIEPAJA:**  
M-F 9.00-17.00

45 GRAUDU STREET, LIEPAJA, LV3401  
**+371 24903777**

**NAILS COSMETICS STORE | JELGAVA:**  
M-F 9.00-17.00

15 LIELA STREET, JELGAVA, LV3001  
**+371 24227479**

**NAILS COSMETICS STORE | VALMIERA:**  
M-F 9.00-17.00

29 RIGAS STREET, VALMIERA, LV4201  
**+371 23202345**

**NAILS COSMETICS STORE | REZEKNE:**  
M-F 9.00-17.00

103 ATBRIVOSANAS ALEJA, REZEKNE, LV4601  
**+371 29567607**

**NAILS COSMETICS STORE | JEKABPILS:**  
M-F 9.00-17.00

9 DRAUDZIBAS ALEJA, JEKABPILS, LV5201  
**+371 27052721**

**NAILS COSMETICS STORE | DAUGAVPILS:**  
M-F 9.00-17.00

19 SAULES STREET, DAUGAVPILS, LV5401  
**+371 27030325**

**NAILS COSMETICS FACEBOOK:**  
@NAISCOSMETICS

**NAILS COSMETICS INSTAGRAM:**  
@NAI\_SCOSMETICS





"WANTED" GEL SYSTEMS	02
"ACRYGEL DUO" GEL SYSTEMS	04
EKSPRESS + GEL NAIL TIPS SYSTEM	07
BASE AND TOP COATS	08
CLASSIC MANICURE	21
NAILS RECOVERY SYSTEM	25
GEL POLISH SYSTEM	26
DESIGN PRODUCTS	30
AUXILIARY PRODUCTS	39
TOOLS	45
ACCESSORIES	48
INSTRUMENTS	50
ELECTRONIC DEVICES	56

# WANTED

## SCULPTING GELS

NAILS COSMETICS technical team has created a gel that every nail artist has always wanted, suitable for both beginners and experienced professionals. Its carefully crafted consistency allows the tech to sculpt nails easily, quickly, and accurately, creating the desired shape and length. This gel combines all the features required for a flawless result:

- an easy-to-apply, self-leveling, and shock-resistant formula that does not leak into the cuticle area and the side walls;
- suitable for work with upper forms;
- thanks to the unique formula, it has a lightweight feel on the nails;
- easy to shape with minimal filing;
- strong adhesion to the natural nail plate (does not form air pockets);
- does not crack or turn yellow;
- extremely durable;
- modern shades, excellent coverage, superior quality;
- the color palette allows you to select a gel shade as close as possible to the natural nail plate (for both cool and warm skin tones);
- available in trendy nude, milky, and camouflage shades.

AVAILABLE IN 2 SERIES:

- WANTED Q5 — high-quality raw materials;
- WANTED Q10 — premium raw materials.

For perfect adhesion and durability,  
we recommend using together with  
QUICK BUILDER HYBRID BASE.





# "WANTED" GEL SYSTEMS



★★★★★

BESTSELLER

## "WANTED Q5" BUILDER GEL

This gel is suitable for both beginners and experienced professionals. Its carefully crafted consistency allows the tech to sculpt nails easily, quickly, and accurately, creating the desired shape and length. High-quality raw materials.

- Medium consistency.
- Will appeal to nail techs who like to work fast — the gel levels out relatively quickly.
- The harder material is designed to model short, medium and long nails.



VOLUME: 5 ml/ 15 ml/ 30 ml/ 50 ml

POLYMERIZATION TIME: LED 60 - 120 sec, UV 2 -3 min



## "WANTED Q10" BUILDER GEL

This gel is suitable for both beginners and experienced professionals. Its carefully crafted consistency allows the tech to sculpt nails easily, quickly, and accurately, creating the desired shape and length. Premium raw materials.

- Thicker consistency.
- For nail technicians who enjoy working unhurriedly, accurately, and meticulously — WANTED Q10 gel levels out more gradually than WANTED Q5 gel, so there is more time to create the gel shape.
- Designed for modeling short, medium, and medium-long nails.



VOLUME: 5 ml/ 15 ml/ 30 ml/ 50 ml

POLYMERIZATION TIME: LED 60 - 240 sec, UV 3 min

REDUCES NAIL  
SCULPTING TIME  
BY HALF

# ACRYGEL DUO



EASY TO USE | DURABLE



- Combines the properties of flexible acrygel and durable "QUICK" gel.
- Has acrylic-like hardness and sturdiness
- Provides perfect grip, durability and flexibility at the same time.
- Perfect for working with thin, brittle nails.
- Creates a very durable layer.
- Thick consistency that does not drain from the nail.
- Easy to use and control; it doesn't flow into the cuticle area.
- Prevents the possibility of "air pockets" and gel lifting from the free edge.

What is the "ACRYGEL DUO" gel used for?

- For nail reconstruction, formation of the perfect square and C curve.
- For nail modeling/extensions - short and long nails.
- Allows shaping nails without filing, using upper forms.
- Reduces nail sculpting time BY HALF.
- Perfect for sculpting problematic nails.
- Provides effortless nail sculpting for every taste — from natural-looking nails to durable arch nails with a perfect C-curve.



# "ACRYGEL DUO" GEL SYSTEMS



## "ACRYGEL DUO"

Polygel acrylic that reduces nail sculpting time by half, works virtually WITHOUT FILING. For use with "DUO BASE", "SLIP SOLUTION", "DUO" nail forms and clips. Available in translucent, nude and color shades. Perfect for creating ombre effect.



VOLUME: 5 ml/ 15 ml/ 30 ml      POLYMERIZATION TIME: LED 30 sec, UV 1 min



## "DUO BASE"

Base coat to use with "ACRYGEL DUO". The unique formula prepares the nail plate for optimal adhesion for modeling "ACRYGEL DUO" gel. "DUO BASE" can also be used as an extra durable gel polish base.

VOLUME: 8 ml/ 15 ml      POLYMERIZATION TIME: LED 30 sec, UV 1 min



## "DUO CLIPS"

Manicure clips for securing the top of the nail while sculpting.

CONTENT: 1 pc

# “ACRYGEL DUO” GEL SYSTEMS



## “SLIP SOLUTION”

This product is designed for use with “ACRYGEL DUO” gel. “SLIP SOLUTION” smoothes the “ACRYGEL DUO” (or analog acrygels), making it easier to create the desired nail shape.

**INSTRUCTIONS:** Use a brush dipped into the “SLIP SOLUTION”, to smooth the “ACRYGEL DUO” and create the desired shape.

VOLUME: 50 ml



## “DUO FORMS”

Reusable nail forms for easy nail sculpting using “ACRYGEL DUO” gel.

The unique shape allows sculpting nails with parallel sides, as well as to create a C-curve on natural nails of any shape.

Available in various styles.

CONTENT: 120 pcs



# EKSPRESS + GEL NAIL TIPS SYSTEM

GEL NAIL

**EXTENSION**

HAS NEVER  
BEEN  
SO EASY!



## “EXPRESS MANICURE GEL NAIL TIPS”

Express extension in a few seconds: easy and fast attaching off a tip to the natural nail plate with NAILS COSMETICS base BASE&GLUE, which significantly saves the manicurist's time, facilitating the modeling process. Very convenient and easy filing. Prefect, natural looking nails. Durable, flexible material. Facilitates nail extension for both classic natural and especially for short and problematic nails. Available in transparant and natural shade.

Available in 2 different forms: BALLERINA and STILETTO.

CONTENT: 240 pcs

**FOR EXCELENT RESULT | USE WITH**



EKSPRESS  
LED LAMP



“BASE & GLUE” or  
“QUICK BUILDER HYBRID BASE”



“WANTED Q5/Q10”  
BUILDER GELS



BASE AND TOP COATS



# BASE COATS | COMPARISON TABLE

## QUICK BUILDER HYBRID BASE

APPLICATION	SHADE	CONSISTENCY
<ul style="list-style-type: none"> <li>- Base coat for gel polishes</li> <li>- Excellent adhesion layer for gels</li> <li>- For nail plate smoothening</li> </ul>	<ul style="list-style-type: none"> <li>- For a small nail extension</li> <li>- Gel nail repair</li> <li>- Nail prosthesis</li> </ul>	Transparent Thick

## QUICK BUILDER COVER BASE

APPLICATION	SHADE	CONSISTENCY
<ul style="list-style-type: none"> <li>- Base coat for gel polishes</li> <li>- For nail plate smoothening</li> <li>- For nail extension</li> </ul>	<ul style="list-style-type: none"> <li>- Gel nail repair</li> <li>- Nail prosthesis</li> </ul>	Palette of 14 covering shades with/ without glitter Thick

## QUICK BUILDER NUDE BASE

APPLICATION	SHADE	CONSISTENCY
<ul style="list-style-type: none"> <li>- Base coat for gel polishes</li> <li>- For nail plate smoothening</li> <li>- For a small nail extension</li> </ul>	<ul style="list-style-type: none"> <li>- For nail extension</li> <li>- Gel nail repair</li> <li>- Nail prosthesis</li> </ul>	Palette of 4 nude shades Medium

## QUICK BUILDER MASQUE SPARKLE BASE

APPLICATION	SHADE	CONSISTENCY
<ul style="list-style-type: none"> <li>- Base coat for gel polishes</li> <li>- For nail plate smoothening</li> <li>- For a small nail extension</li> </ul>	<ul style="list-style-type: none"> <li>- For nail extension</li> <li>- Gel nail repair</li> <li>- Nail prosthesis</li> </ul>	Palette of 5 nude shades/ with glitter Medium

## MILKY BUILDER BASE

APPLICATION	SHADE	CONSISTENCY
<ul style="list-style-type: none"> <li>- Base coat for gel polishes</li> <li>- For nail plate smoothening</li> <li>- For a small nail extension</li> </ul>	<ul style="list-style-type: none"> <li>- For nail extension</li> <li>- Gel nail repair</li> <li>- Nail prosthesis</li> </ul>	Milky/ covering Medium

## BASE & GLUE

APPLICATION	SHADE	CONSISTENCY
<ul style="list-style-type: none"> <li>- Base coat for gel polishes</li> <li>- Nail tips glue- for standart and express tips</li> </ul>	<ul style="list-style-type: none"> <li>- Glue for decor</li> </ul>	Transparent Light

# BASE COATS | COMPARISON TABLE

## PEDICURE MOLECULAR BASE

APPLICATION	SHADE	CONSISTENCY
- Base coat for gel polishes, specially made for pedicure	Transparent	Light

## QUICK BUILDER CLEAR ORIGINAL/ I / II

APPLICATION	SHADE	CONSISTENCY
<ul style="list-style-type: none"> <li>- Base coat for gel polishes</li> <li>- For nail plate smoothening</li> <li>- For a small nail extension</li> </ul>	<ul style="list-style-type: none"> <li>- For nail extension</li> <li>- Gel nail repair</li> <li>- Nail prosthesis</li> </ul>	Transparent I - light ORIGINAL - medium II - thick

## QUICK MASQUE BASE ORIGINAL/ I / II

APPLICATION	SHADE	CONSISTENCY
<ul style="list-style-type: none"> <li>- Base coat for gel polishes</li> <li>- For nail plate smoothening</li> <li>- For a small nail extension</li> </ul>	<ul style="list-style-type: none"> <li>- For nail extension</li> <li>- Gel nail repair</li> <li>- Nail prosthesis</li> </ul>	Effect of natural nail/ masking, but not fully covering I - light ORIGINAL - medium II - thick

## RUBBER HARD BASE BUILDER GEL

APPLICATION	SHADE	CONSISTENCY
<ul style="list-style-type: none"> <li>- Base coat for gel polishes</li> <li>- For nail plate smoothening</li> <li>- For nail extension</li> </ul>	<ul style="list-style-type: none"> <li>- Gel nail repair</li> <li>- Nail prosthesis</li> <li>- Gel in a bottle</li> </ul>	Transparent Thick

## QUICK MOLECULAR BASE

APPLICATION	SHADE	CONSISTENCY
- Base coat for gel polishes	Transparent	Light

## DUO BASE

APPLICATION	SHADE	CONSISTENCY
<ul style="list-style-type: none"> <li>- Base coat for gel polishes</li> <li>- Base coat for ACRYGEL DUO gel</li> </ul>	Transparent	Light

# BASE AND TOP COATS



★★★★★

BESTSELLER

## “QUICK BUILDER HYBRID BASE”

Durable and flexible base suitable for levelling out the nail plate, for nail extension.

Applied in thin layer flexible - provides excellent adhesion with any material (base, gel, acrylic).

In thick layer - durable and excellent suitable for fastening the nail plate, for extension, alignment and work with problematic nails.

“Soak Off” formula.

VOLUME: 8 ml/ 15 ml/ 100 ml    POLYMERIZATION TIME: LED 30 sec, UV 1 min



★★★★★

BESTSELLER

## “QUICK BUILDER COVER BASE”

The most beloved product which won't disappoint any master. Extremely durable all-in-one camouflage base, colored gel, sculpting gel, that does not damage the nail plate. Perfect for strengthening and smoothing the nail plate and working with weak, brittle, problematic nails. Relatively thicker consistency. Perfectly polymerizes, there is no need for additional transparent base layer underneath it.

“Soak- off” formula.



VOLUME: 8 ml/ 15 ml/ 100 ml    POLYMERIZATION TIME: LED 30 sec, UV 1 min



# BASE AND TOP COATS



## “QUICK BUILDER NUDE BASE”

A camouflaging base/gel of excellent durability that is gentle to the natural nail and does not damage the nail plate.

A unique product can be used for many purposes:

- Base designed for quick, easy nail plate smoothing and strengthening.
- The excellent nude shades are suitable for a beautiful French design, as well as for covering the nail – for a natural look.
- Gel in a bottle for natural nail extension and modeling.
- Product for fast and high-quality nail repair.
- Product for nail prosthesis.

This product is based on the formulas of the popular QUICK BUILDER CLEAR and QUICK BUILDER MASQUE BASE products.



VOLUME: 15 ml

POLYMERIZATION TIME: LED 30 sec, UV 1 min



## “QUICK BUILDER MASQUE SPARKLE BASE”

Masking, lightly sparkling base/gel, base for gel polishes, BIO gel, gel in a bottle for extensions of natural nail, modeling, for natural nail coating and strengthening, for nail plate smoothing. Does not yellow or crack. Does not have “Soak-off” formula.



VOLUME: 15 ml

POLYMERIZATION TIME: LED 30 sec, UV 1 min

# BASE AND TOP COATS



## “MILKY BUILDER BASE”

A milky-colored base/gel with perfect persistence and excellent self-leveling abilities.

This base/gel is a unique product with many uses:

- Base for gel polishes.
- Gel for lengthening natural nail(extensions).
- For coating, strengthening and leveling the surface of a natural nail.
- Nail prosthesis product.

Does not yellow or crack. “Soak off” formula.

VOLUME: 8 ml/ 15 ml

POLYMERIZATION TIME: LED 30 sec, UV 1 min



## “BASE & GLUE”

Unique two-in-one product: nail glue and base. Creates the base layer of perfect persistence and is an excellent means of connection between a natural nail and a gel polish or extension gel.

Also used as a glue layer for attaching nail tips, and adhesion nail glue for fastening crystals and stones.

“Soak off” formula.

VOLUME: 8 ml/ 15 ml

POLYMERIZATION TIME: LED 30 sec, UV 1 min



## “PEDICURE MOLECULAR BASE”

A base specifically created for pedicure.

Thanks to its consistency, it does not make the nails thick, reducing the risk of injury. The special molecular particle compound adheres firmly to the natural nail, creating a perfect base layer, resulting in strong and hard nails.

VOLUME: 15 ml

POLYMERIZATION TIME: LED 30 sec, UV 1 min

# BASE AND TOP COATS



## “QUICK BUILDER CLEAR” ORIGINAL/ I/ II

A transparent all-in-one base for gel polishes, BIO gel, sculpting gel- everything in one bottle. Perfect for strengthening natural nails and smoothing the nail surface. The product can be used as a base coat before applying gel polish, for nail sculpting and quick, quality nail repair, as well as for nail prosthesis procedures. Does not yellow or crack. “Soak-off” formula.

**QUICK I** - light consistency  
**ORIGINAL** - medium consistency  
**QUICK II** - thick consistency

VOLUME: 8 ml/ 15 ml/ 100 ml    POLYMERIZATION TIME: LED 30 sec, UV 1 min



## “QUICK BUILDER MASQUE BASE” ORIGINAL/ I/ II

Lightly masking gel base for gel polishes, BIO gel, sculpting gel. Ideal for masking natural nail imperfections and creating a french manicure. Perfect for strengthening natural nails and smoothing the nail surface. The product can be used as a base coat before applying gel polish, for nail sculpting and quick, quality nail repair, as well as for nail prosthesis procedures. Does not yellow or crack. “Soak-off” formula.

**QUICK I** - light consistency  
**ORIGINAL** - medium consistency  
**QUICK II** - thick consistency

VOLUME: 8 ml/ 15 ml/ 100 ml    POLYMERIZATION TIME: LED 30 sec, UV 1 min



# BASE AND TOP COATS



## “RUBBER HARD BASE BUILDER GEL”

Durable hard base for nail modeling. Medium/thick consistency, does not flow, perfectly self-aligns. Does not have "Soak off" formula (removable with a file or manicure milling cutter).

With this base it is possible to use for:

- Nail modeling for medium- long nails on forms.
- Base coat under gel polishes.
- Nail plate smoothening.

Suitable for problematic, breaking or deformed nails.

VOLUME: 15 ml

POLYMERIZATION TIME: LED 30 sec, UV 1 min



## “QUICK MOLECULAR BASE”

Protective gel polish base coat for weak, brittle, and normal nails. Due to its light consistency, it applies like ordinary nail polish and is excellent for pedicures, creating a natural-like effect. Molecular compounds form a perfect base coat and are an excellent bond between the natural nail and the gel polish. The molecular particles adhere perfectly to the natural nail, making them strong and sturdy. Soak off" formula.

VOLUME: 12 ml

POLYMERIZATION TIME: LED 30 sec UV 1 min



## “DUO BASE”

Base coat, which is created for work with the "ACRYGEL DUO" gel. A specially developed formula prepares a durable coating of the nail plate for "ACRYGEL DUO" gel modeling. "DUO BASE" can also be used as a base of excellent persistence for gel polishes.

VOLUME: 8 ml/ 15 ml

POLYMERIZATION TIME: LED 30 sec, UV 1 min

# TOP COATS | COMPARISON TABLE

## QUICK CRYSTAL SHINE TOP

APPLICATION	EFFECT	TACKY LAYER	CONSISTENCY
- For gels and gel polishes	Glossy/ shiny Without UV blue layer	No	Light

## BUILDER TOP COAT

APPLICATION	EFFECT	TACKY LAYER	CONSISTENCY
- For gels and gel polishes - For coating the design - For nail plate smoothening	Glossy/ shiny	No	Thick

## RESISTANT RUBBER TOP

APPLICATION	EFFECT	TACKY LAYER	CONSISTENCY
- For gels and gel polishes - For nail plate smoothening	Glossy/ shiny	No	Medium

## CHROME TOP COAT

APPLICATION	EFFECT	TACKY LAYER	CONSISTENCY
- For gels and gel polishes - For nail plate smoothening - For covering chrome and metallic designs	Glossy/ shiny	No	Medium

## MILKY TOP COAT

APPLICATION	EFFECT	TACKY LAYER	CONSISTENCY
- For gels and gel polishes - For nail plate smoothening	Glossy/ milky	No	Medium

## VELVETEEN MATTE TOP

APPLICATION	EFFECT	TACKY LAYER	CONSISTENCY
- For gels and gel polishes	Velvety/ matte	No	Medium

## QUICK SPARKLE SHINE TOP

APPLICATION	EFFECT	TACKY LAYER	CONSISTENCY
- For gels and gel polishes	Glossy/ shiny with glitters	No	Medium

## QUICK DOT GLOSS/ MATTE TOP

APPLICATION	EFFECT	TACKY LAYER	CONSISTENCY
- For gels and gel polishes	Glossy/ matte with design elements	No	Medium

# BASE AND TOP COATS



## “QUICK CRYSTAL SHINE TOP”

Ultra shiny top coat without a sticky layer and without a UV blue coating. Providing excellent shine and durability until the next nail prevention procedure. Does not change the base color, does not turn yellow or crack. Emphasizes any shade of gel or gel polish. Perfect for french manicure coating. Protects manicure from scratches.

VOLUME: 8 ml/ 15 ml/ 100 ml      POLYMERIZATION TIME: LED 30 sec, UV 1 min



## “BUILDER TOP COAT”

Top coat without a tacky layer for smoothening and strengtning of gel polish or gel. Relatively thicker consistency, suitable for coating 3D designs. Providing excellent shine. Does not change the base color, does not turn yellow or crack. Emphasizes any shade of gel or gel polish. Protects manicure from scratches.

VOLUME: 15 ml/ 100 ml      POLYMERIZATION TIME: LED 30 sec, UV 1 min



## “RESISTANT RUBBER TOP”

Excellent glossy rubber top coat without a tacky layer. Scratch-resistant, rubbery, with a thinner consistency. Suitable for use on top of gels and gel polishes. Does not yellow.

VOLUME: 8 ml/ 15 ml      POLYMERIZATION TIME: LED 30 sec, UV 1 min



# BASE AND TOP COATS



## “CHROME TOP”

Top coat without a tacky layer that provides superb shine and long-lasting durability. Does not leave uncovered spots (streaks) and ensures full, even coverage of the nail plate. Suitable for covering chrome and metallic designs.

VOLUME: 8 ml/ 15 ml

POLYMERIZATION TIME: LED 30 sec, UV 1 min



## “MILKY TOP COAT”

A top coat without a tacky layer that provides a masking, slightly milky effect. Intended for covering the entire nail or creating trendy designs. Suitable for creating the Baby Boomer and Ombre effects. This top coat will help mask imperfections, as well as create a milky french manicure effect. Suitable for use on top of gels and gel polishes.



VOLUME: 8 ml/ 15 ml

POLYMERIZATION TIME: LED 30 sec, UV 1 min

# BASE AND TOP COATS



## “VELVETEEN TOP”

Velvety, matte top coat without a tacky layer that provides a perfect finish and durability. It does not alter the shade of the gel or gel polish and is perfectly compatible with both light and dark pigments. The matte finish does not wear out with time, peel, or crack.

VOLUME: 8 ml/ 15 ml

POLYMERIZATION TIME: LED 30 sec, UV 1 min



## “QUICK SPARKLE SHINE TOP”

Top coating without a sticky layer with a glow effect. Suitable for smoothing both- gel and gel polish coatings.

Available in 3 TYPES:

- STARLIGHT- with fine golden, iridescent particles.
- TENDER- with fine, multi-colored, iridescent particles.
- MAJESTIC- with glistening opal glitter.



VOLUME: 8 ml

POLYMERIZATION TIME: LED 30 sec, UV 1 min

# BASE AND TOP COATS

## “QUICK DOT GLOSS TOP”

Glossy top coat without a tacky layer. The latest nail trend is a finish consisting of design particles that create a stylish effect and add depth to the nail design. A long-lasting shine will protect the gel polish from scratches. "Strokes" of different types, colors, and sizes.



VOLUME: 8 ml

POLYMERIZATION TIME: LED 30 sec, UV 1 min

## “QUICK DOT MATTE TOP”

Matte top coat without a tacky layer. The latest nail trend is a finish consisting of design particles that create a stylish effect and add depth to the nail design. A long-lasting shine will protect the gel polish from scratches. "Strokes" of different types, colors, and sizes.



VOLUME: 8 ml

POLYMERIZATION TIME: LED 30 sec, UV 1 min





CLASSIC MANICURE



# CLASSIC MANICURE



## “CUTICLE REMOVER”

Cuticle Remover does an excellent job of softening and loosening cuticles in a matter of seconds. It is ideal for cuticle removal in both classic and dry manicure and pedicure procedures. It can be used before nail sculpting with gel or acrylic. Available with a brush or a dropper.

VOLUME: 15 ml/ 30 ml/ 100 ml



## “CUTICLE OIL”

Moisturizing, softening, and fragrant cuticle oil that contains high levels of omega-3, 6, and 9, as well as antioxidants. It deeply softens cuticles and the skin around the nail plate and prevents the emergence of air pockets under artificial nails. Available in various scents.

VOLUME: 15 ml



## “AMALFI GARDENS” PROTECTIVE LOTION

Amalfi Gardens PROTECTIVE hand and body lotion can be used daily, for all type hand skin and nail care. Especially suitable for dry and sensitive skin. The lotion makes the skin soft and smooth while protecting it from temperature fluctuations, wind, and the negative effects of environmental pollution. Avocado oil deeply softens the skin and has moisturizing, healing, and antibacterial properties. Plant-based ingredients gently coat the skin with a protective layer, reducing moisture loss while still allowing the skin to breathe. Aloe vera helps maintain moisture balance, preserving the skin's youthfulness and beauty. Glycerin is a natural skin hydrator.

VOLUME: 200 ml/ 500 ml

# CLASSIC MANICURE



## “MONACO MIST” LIFTING EFFECT LOTION

Monaco Mist Lotion with LIFTING EFFECT for hands and body is intended for a mature hand and body skin care. Lotion provides active protection against skin aging, it activates renewal cycle of cell, making skin significantly smoother and firmer. The skin becomes more youthful, it will be deeply moisturized and restored. Argan oil softens the skin and has moisturizing, nourishing, enhancing, regenerating, anti-wrinkle and intracellular respiration-stimulating properties. Plant ingredients gently coats the skin with a protective layer and reduces the evaporation of moisture while allowing skin it to breathe. Aloe vera helps maintain moisture balance, keep the skin young and beautiful.

VOLUME: 200 ml/ 500 ml



## “FLORIDA LITCHI” MOISTURISING LOTION

Florida Litchi MOISTURISING hand and body lotion can be used daily, for all type hand skin and nail care. Especially suitable for dry and sensitive skin. The lotion makes the skin soft and smooth while protecting it from temperature fluctuations, wind, and the negative effects of environmental pollution. Avocado oil deeply softens the skin and has moisturizing, healing, and antibacterial properties. Plant-based ingredients gently coat the skin with a protective layer, reducing moisture loss while still allowing the skin to breathe. Aloe vera helps maintain moisture balance, preserving the skin's youthfulness and beauty. Glycerin is a natural skin hydrator.

VOLUME: 200 ml/ 500 ml



## “BALI COCONUT” NOURISHING LOTION

Bali Coconut NOURISHING hand and body lotion can be used daily, for all type hand skin and nail care. Especially suitable for dry and sensitive skin. The lotion makes the skin soft and smooth while protecting it from temperature fluctuations, wind, and the negative effects of environmental pollution. Avocado oil deeply softens the skin and has moisturizing, healing, and antibacterial properties. Plant-based ingredients gently coat the skin with a protective layer, reducing moisture loss while still allowing the skin to breathe. Aloe vera helps maintain moisture balance, preserving the skin's youthfulness and beauty. Glycerin is a natural skin hydrator.

VOLUME: 200 ml/ 500 ml

# CLASSIC MANICURE



## “FAST DRY” NAIL POLISH TOP COAT

Quick-drying nail polish top coat with nano-particles. Also suitable for use alone on natural nails to give them a pronounced shine. Protects against scratches.

VOLUME: 14 ml



## “P. SHINE” JAPANESE MANICURE

Japanese manicure is a dream-come-true for anyone who wants their nails to be healthy and strong. Not only does it help repair cracked and broken nails, giving them a new life, but it also greatly stimulates nail growth. Japanese manicure is a natural procedure that does not involve chemicals to keep nails healthy and strong. It is suitable for brittle and cracked nails. Its development is based on ancient nail care procedures and the traditions of the Japanese aristocracy. After P.Shine Japanese manicure, the nails are beautiful, shiny, healthy, and strong. The main component of the Japanese manicure is beeswax. When pressed into the nail plate fibers, it restores the beauty and shine of the natural nail. It is a biologically active ingredient that has healing properties. It promotes the vitality of the skin and nails and protects against the negative effects of decorative cosmetics. Furthermore, it helps restore the structure of the nail plate after artificial nail removal.

### COMPONENTS:

- deer leather polishers (2 pcs),
- nourishing paste,
- polishing powder,
- abrasive files (3 pcs),
- suede cloth,
- pusher.

# NAILS RECOVERY SYSTEM



## “KERATIN TREATMENT”

Highly effective nail strengthener in a subtly masking shade. Suitable for very badly damaged or weakened nails with a tendency to break, split, and crack. The natural keratin in the composition strengthens the nail plate and forms a protective layer.

- Smooths the nail surface and fills in the ridges of the nail plate
- Promotes the growth of a strong nail plate
- Prevents nail yellowing

**INSTRUCTIONS:** Apply one coat on clean, dry nails, and let dry for 2 minutes. Next, apply your favorite nail polish. If you only want to use the nail strengthener for a natural effect, apply two coats.

VOLUME: 14 ml



## “VITAMIN COMPLEX”

An effective treatment for damaged nails, which gives them a NEW life by smoothing the nail surface and filling the damaged parts of the nail plate. The active ingredient concentrates and vitamin compounds in the composition make nails extra strong and sturdy. Suitable for use after artificial nail removal (gel, gel polish).

- Promotes the growth of a strong nail plate
- Restores nail moisture levels, making the nails flexible and strong
- Strengthens and moisturizes the nails, restoring them on a cellular level
- Restores hopeless, weak, broken, thin nails, strengthening the nail plate in as little as 3 weeks. Significant improvement can be observed after 2 weeks.

**INSTRUCTIONS:** Apply one coat and let dry for 2 minutes. Apply a second coat, allow it to dry for 2–3 minutes. Renew every 1–3 days, applying the treatment on top of the previous layer. After a week, remove the product entirely and then repeat the procedure.

VOLUME: 14 ml





GEL POLISH SYSTEM



# GEL POLISH SYSTEM

AVAILABLE 600+ SHADES



## "GEL POLISH"

Long-lasting, intensely pigmented gel polish. Easy to apply, dries well, does not shrink or shrink back from the free edge of the nail.

AVAILABLE IN MORE THAN 300 SHADES  
CLASSIC AND DESIGN COLLECTIONS



## GEL POLISH DESIGN COLLECTIONS

"LOLIPOP" collection  
"SANDY" collection  
"GALAXY" collection  
"RAINBOW" collection  
"DISCO" collection

"GLOW IN DARK" collection  
"VITRAGE" collection  
"NEON" collection  
"HOLOGRAPHIC" collection  
"CORAL REEF" collection

VOLUME: 12 ml

POLYMERIZATION TIME: LED 30 sec, UV 1 min

## TREND COLLECTIONS

VIEW ALL COLLECTIONS:  
[WWW.NAILSCOSMETICS.LV](http://WWW.NAILSCOSMETICS.LV)

## "VITRAGE" COLLECTION COLLECTION OF 6 SHADES



## "GALAXY" COLLECTION COLLECTION OF 10 SHADES



## GLOW IN DARK "DISCO" COLLECTION COLLECTION OF MORE THAN 30 SHADES



# GEL POLISH SYSTEM

AVAILABLE 600+ SHADES



## “QUICK GEL POLISH”

Long-lasting, intensely pigmented gel polish. Easy to apply, dries well, does not shrink or shrink back from the free edge of the nail.

AVAILABLE IN MORE THAN 200 SHADES



VOLUME: 12 ml

POLYMERIZATION TIME: LED 30 sec, UV 1 min



## “GEL X 3 IN 1 GEL POLISH”

Long-lasting, intensely pigmented gel polish that can be applied to strong nails without using a base and top coat.

Especially suitable for pedicure procedures.  
Has a pronounced gloss and 4-week durability.

AVAILABLE IN MORE THAN 15 SHADES



VOLUME: 12 ml

POLYMERIZATION TIME: LED 30 sec, UV 1 min

# GEL POLISH SYSTEM

AVAILABLE 600+ SHADES



## “MAGNETIC”- DESIGN GEL POLISH

A long-lasting gel polish consisting of metal micro-particles that can be transformed into different patterns and accents under the influence of a special magnet.

A high-quality, specially designed magnet is required for the design creation.

The gel polish has an intense, opaque pigment. It doesn't leak, crack, or peel off, making it suitable for sub-cuticle application- ideal for creating SATIN and CAT EYE effect designs, as well as HOLOGRAPHIC designs on any chosen gel polish.

## MAGNETIC DESIGN COLLECTIONS

“MAGNETIC HOLOGRAPHIC” collection

“MAGNETIC SATIN” collection

“MAGNETIC DISCO” collection

VOLUME: 12 ml

POLYMERIZATION TIME: LED 30 sec, UV 1 min

## TREND COLLECTIONS

VIEW FULL COLLECTION:  
[WWW.NAILSCOSMETICS.LV](http://WWW.NAILSCOSMETICS.LV)

## “MAGNETIC HOLOGRAPHIC” COLLECTION

1 PRODUCT - FOR HOLOGRAPHIC EFFECT



## “MAGNETIC SATIN” COLLECTION

COLLECTION OF 6 SHADES



## “MAGNETIC DISCO” COLLECTION

AVAILABLE IN MORE THAN 30 SHADES





# ICONIC CLASSIC COLLECTION

HIGHLY PIGMENTED GEL POLISH COLLECTION

QUICK SERIES | 3 ICONIC SHADES



## QUICK FRENCH WHITE LINE

a pure white shade, perfect for creating a striking French manicure or covering the entire nail

## QUICK CLASSIC RED

a classic red shade that adds elegance and femininity to any manicure

## QUICK INTENSIVE BLACK

a deep black shade that provides intense and fully opaque coverage



## WHY CHOOSE?

- EVEN COVERAGE WITHOUT STREAKS – thanks to its high pigmentation, the gel polish applies smoothly for a flawless result
- VERSATILE – suitable for full nail coverage as well as various designs (for example, precise lines or French-style tips)
- SHORT CURING TIME – only 30 seconds under an LED lamp or 1 minute under a UV lamp, allowing for faster and more efficient work
- CONVENIENT SIZE – enough product for prolonged use in a salon or at-home manicure practice  
Available in 8ml and 15ml.

Create impeccable, classic, or daring manicures with these three indispensable gel polishes, forming the foundation of any professional nail artist's kit!

# GEL POLISH SYSTEM

AVAILABLE 600+ SHADES



## “QUICK FRENCH WHITE LINE”

Specially designed white gel polish for a French manicure that makes it very easy to create a perfect French smile line. It applies evenly and does not smudge, resulting in excellent French design nails that do not crack or yellow. Also suitable for painting the entire nail.



VOLUME: 8 ml/ 15 ml

POLYMERIZATION TIME: LED 30 sec, UV 1 min



## “QUICK CLASSIC RED”

Highly pigmented, elegant red gel polish that applies in a single coat. It spreads evenly, does not leak, and does not create streaks. A classic red shade that adds elegance and femininity to any manicure. Perfect for full nail coverage or as a base layer for design gel polishes.



VOLUME: 8 ml/ 15 ml

POLYMERIZATION TIME: LED 30 sec, UV 1 min



## “QUICK INTENSIVE BLACK”

Intensely pigmented black gel polish. It applies evenly, does not smudge or streak. Perfect for both painting the entire nail and for using as a base coat before design gel polish application (Peacock, Cat Eye, Chromatic, 12D Galactic, etc.).



VOLUME: 8 ml/ 15 ml

POLYMERIZATION TIME: LED 30 sec, UV 1 min





DESIGN PRODUCTS



# DESIGN PRODUCTS



## “BLOOMING BASE”

A transparent base designed to be used for easier and faster nail design drawings- marble, floral and abstraction designs. Easy to use with any gel polish.



VOLUME: 8 ml

POLYMERIZATION TIME: LED 30 sec, UV 1 min



## “FLOWER DESIGN GEL”

A long-lasting gel with elements of dry flowers. An easy-to-lay formula, an excellent consistency that does not depart from the free edge and holds perfectly in place. Apply the product, on a gel, base or gel polish.



VOLUME: 5ml

POLYMERIZATION TIME: LED 30 - 60 sec, UV 2 - 3 min



## “AQUARELLE WATERCOLOR INK”

Aquarelle is a nail design technique that creates a watercolor effect. Aquarelle allows you to easily and quickly create color transition effects on nails (marble effect, abstraction, floral motifs, etc.).



VOLUME: 15 ml



# DESIGN PRODUCTS



## “LINER ART GEL”

Design gel for drawing fine, even, pigmented lines.  
A great helper for French and creating designs.



VOLUME: 6 ml

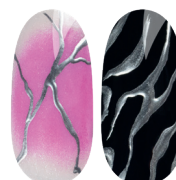
POLYMERIZATION TIME: LED/UV 1 min



## “METALLIC GEL” DESIGN GEL

An intensely pigmented metal design gel that helps create relief designs, patterns and abstractions.

**USE:** Create the desired design on the prepared nail plate, polymerize in the lamp.



VOLUME: 5 ml

POLYMERIZATION TIME: LED 1 min, UV 1 min



## “SPIDER SILK”

A flexible, viscous design product that helps create abstractions, geometric patterns, and fine lines.  
Intense pigmentation.



VOLUME: 5 ml

POLYMERIZATION TIME: LED 30 sec, UV 1 min

# DESIGN PRODUCTS



## “CHROME LIQUID”

Design product for creating a bright mirror effect.

**USE:** Shake before use. Apply the CHROME LIQUID to the topcoat and rub it in easily. Apply BRILLIANT BOND on the perimeter of the nail plate. Cover the nail with CHROME TOP and polymerize in the lamp for 60 sec.



VOLUME: 5 ml



## “MIRROR SHINE POWDER” WITH APPLICATOR

Very pigmented shades with a mirror gloss for a bright and noticeable manicure! Ideal for use with QUICK TOP without a tacky layer.



VOLUME: 1.5 g

# DESIGN PRODUCTS

## “PLATINUM SHINE POWDER” WITH APPLICATOR



High-quality, metallic mirror effect design powder for great shine. At the moment, a bright and noticeable manicure is relevant. Ideal for use with any shade of gel polish.

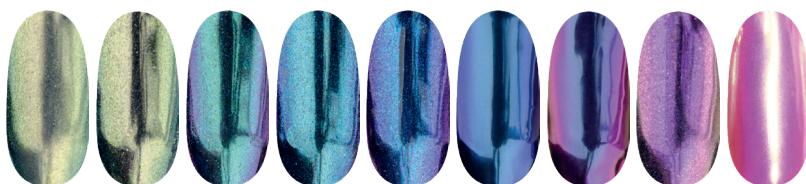


VOLUME: 0.5 g

## “ROYAL MIRROR SHINE” DESIGN POWDER



High-quality design powder for a metallic mirror gloss finish.



VOLUME: 0.5 - 1 g

## “CHROME” POLISH

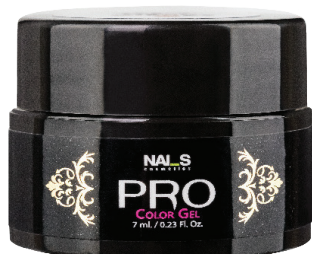


Use Chrome Color gel polish to create the effect of a chrome or mirror finish on the entire nail plate or its parts.  
Drying time: air-dry for 3–5 minutes.  
Perfect together with CHROME TOP COAT.



VOLUME: 12 ml

# DESIGN PRODUCTS



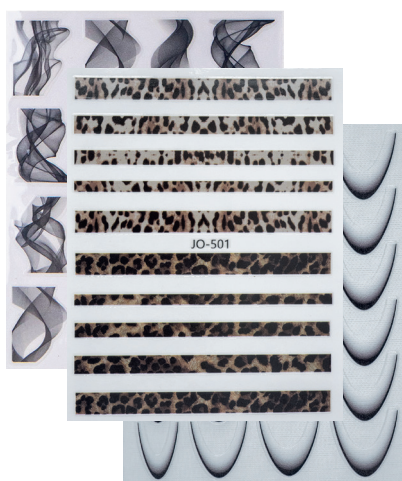
## “PRO COLOR GEL”

High-quality color gels with 4D pigment and intense shade. Helps draw fine lines and create different designs. Suitable for painting the entire nail without making it thick. It does not smudge or flow. Available in a wide range of colors- 90+ shades.



VOLUME: 5 ml

POLIM. LAIKS: LED 30 sek, UV 1 min



## “SELF STICKY” STICKERS FOR NAIL DESIGN

Professional stickers for nail design. Over 20 different themed designs for a professional result.



## “SKIN PRO TEC” Liquid Latex

The latex protective film is designed to protect the cuticle from excess nail polish, gel polish or design material.

**APPLICATION:** apply to the cuticles around the nails. Allow to dry. Apply polish/design elements. After the procedure, remove the product with tweezers or a wooden stick.

VOLUME: 15 ml



# DESIGN PRODUCTS

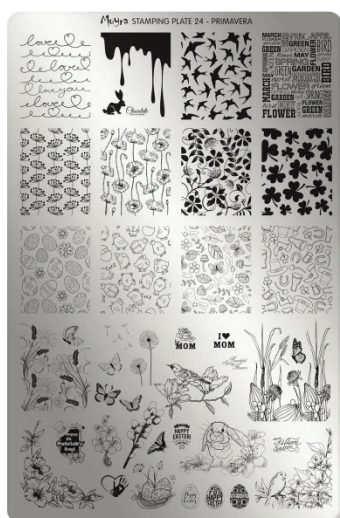


## “STAMPING GEL” DESIGN POLISH

A stamp art nail design product that provides a professional result. Even a novice will be able to create a beautiful, elegant design easily and quickly. Easily and quickly forms the necessary imprint. Air drying.



VOLUME: 8 ml/ 12 ml



## “STAMPING” PLATES

Metal stamping plates to help you effortlessly create high-quality, unique, and beautiful nail designs.

AMOUNT: 1 pc



## “STAMPING” DOUBLE-SIDED STAMPER

The double-sided stamper helps transfer a design to the nail. Both pads are made of high-quality silicone, which will perfectly transfer even the most delicate pattern from the plate to the nail surface. The stamp adapts to any shape of the nail; as a result, the print will be precise.

### CONTENT:

- two swappable pads — transparent (for quick and comfortable transfer of the pattern to the nails), white (for reducing the image);
- plastic scraper for removing excess polish from the plate.

# DESIGN PRODUCTS



## “TELEPORT STICKY GEL”

A gel that transfers foil design onto nails. It helps create the most unique nail art: from trendy animal and floral prints to lace, geometry, and holographic patterns.

VOLUME: 8 ml

POLYMERIZATION TIME: LED 1 min, UV 1 min



## “DESIGN FOIL”

Excellent quality foil for nail art.  
Wide range of designs.

AMOUNT: SET OF 10 pcs



## “TELEPORT ART” FOIL

Foil for nail design. A versatile and wide range of design options, intended to be used with TELEPORT STICKY GEL. Available in sets and individually.



CONTENT/ DIMENSIONS: 1 PC/ 20 x 4 cm

AMOUNT: SET OF 10 pcs

# DESIGN PRODUCTS



## “DIAMOND GLUE” FOR DESIGN STONES

Durable glue that polymerizes in the lamp. Thanks to a specially devised composition, it forms a strong adhesion between the nail plate and crystals of various types and sizes, guaranteeing durability for several weeks.

VOLUME: 8 ml



## COLORED GLITTER "KAMI FUBIKI"

Colorful and tinseling glitters for creating nail design.

VOLUME: 1 g



## “HALO GLITTER”

Halographic glitters for creating various designs.

VOLUME: 1 g



# DESIGN PRODUCTS



## METALLIC BALLS

Metallic balls for creating nail designs with gems and beads. Available in 5 shades: white, silver, gold, rose gold, dark gray.

DIAMETER: 0.4 - 0.8 mm



## "CRYSTAL IN JAR"

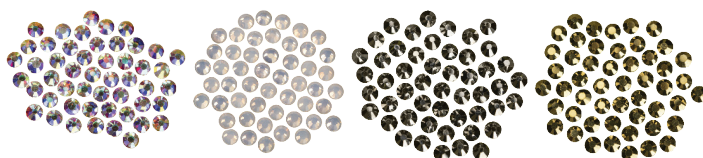
Different color and size decorative stones for creating various designs.

VOLUME: 1 g



## "ROYAL GEMS"

Crystals of different shades and sizes for a dazzling nail design.



AMOUNT: 50 pcs



AUXILIARY PRODUCTS

# AUXILIARY PRODUCTS



## “WIPE OFF SOLUTION 3 IN 1”

3-in-1 solution for degreasing and dehydrating the nail plate, removing the tacky layer, and disinfecting hands and nails. The solution helps prevent the formation of air pockets.

VOLUME: 30 ml/ 100 ml/ 500 ml



## “POLISH REMOVER”

Gentle and effective acetone-free nail polish remover.

VOLUME: 100 ml/ 500 ml



## “ACETONE”

Purified acetone for quick gel polish, acrylic, and soak-off product removal.

VOLUME: 100 ml



## “SOAK OFF”

Professional product for quick gel polish and other soak-off product removal. Does not dry out the hands.

VOLUME: 100 ml/ 500 ml



# AUXILIARY PRODUCTS



## “BRUSH CLEANER”

An especially gentle cleaner that quickly removes acrylics, gels, and gel polishes from brushes.

VOLUME: 100 ml



## “GEL BRUSH CLEANSER & RESTORES”

Thus innovative gel brush cleaner and restorer not only gently cleans the tools, but also protects the bristles from drying out — brushes look new longer. The cleanser has a gel-like consistency.

VOLUME: 30 ml



## “PREMIUM SANITIZER ADASEPT”

Premium quality alcohol-based disinfectant, ready for use. Easy to spray to ensure a high level of hygiene.

VOLUME: 100 ml/ 150 ml/ 500 ml



## “SOFT SILK SANITIZER”

Designed for professional use: for hand and surface disinfection. The product contains components that preserve the elasticity and softness of the skin without drying it.

VOLUME: 100 ml/ 150 ml/ 500 ml

## AUXILIARY PRODUCTS



### NAIL CLIPS FOR SHAPING

Nail clips for creating a perfect C-curve.

AMOUNT: 6 pcs.



### ALUMINUM NAIL SCULPTING FORMS

Extremely durable nail sculpting forms that make the nail technician's job easier. Very hard and well-built, with a reinforced layer of glue, which helps to keep the form still during the nail extension procedure. Easily attaches and snugly fits the nail plate. Made of durable material that does not break easily. Designer line patterns divided into groups will help you effortlessly adjust the form to any nail type. They simplify work with different types of natural nail shapes- classic, rectangular, oval (the markings on the form show the lines to cut along).

AMOUNT: 1 pc/ 30 pcs/ 300 pcs



### “NAIL GLUE”

Strong fixation, quick-drying glue for tips. Guarantees maximum durability and flawless adhesion. Two types available: with a dropper, with a brush.

VOLUME: 3 ml/ 5 ml/ 10 ml

# AUXILIARY PRODUCTS



## “BRILLIANT BOND”

An acid-free primer that provides excellent adhesion of natural nails to gel, gel polishes, acrylic, and glue due to gently removing natural oils and dirt. Effective yet gentle on the nails.

VOLUME: 10 ml/ 15 ml



## “DIAMOND PRIMER”

Acid nail primer. This product is used sparingly to degrease and dehydrate the nail plate and remove natural oils, providing excellent adhesion to gel polishes, gels, and acrylics. It has an antifungal effect.

VOLUME: 7 ml



## “LINE OUT”

An all-purpose agent for removing traces of air pockets. It penetrates places where the gel or acrylic lifts off and creates adhesion of the applied products to the natural nail. Prevents yellowing.

VOLUME: 7 ml



# AUXILIARY PRODUCTS



## “PREMIUM FIT” TIPS

Thin, flexible nail tips. Their unique shape helps sculpt perfect nails with parallel edges and a C-curve. Suitable for natural nails of any shape.

AMOUNT/SIZE: 50 pcs./ 100 pcs/ 150 pcs/ 250 pcs/ 1 -10 size.



## “LINT - FREE NAIL WIPES”

Lint-free nail wipes do not leave any lint behind. White, in a box.

AMOUNT/SIZE: 500 PCS/ 5 x 5 cm



## GLASS

Simple, practical and durable glass for all-purpose use.

SIZE: H: 3cm/ Ø 2.7cm



## COLOR PALETTES

Different types of palettes for displaying shades/nail designs.



TOOLS

# TOOLS



## MANICURE HAND REST

The armrest is made of eco-leather, it feels soft to the touch and is easy to care.

Color: black

DIMENSIONS: 30 x 10 x 6.5cm



## HAND REST "ULKA"

High-quality manicure arm rest, which will help to provide even more comfort for both- you and your customer. Arm rest has metal legs with silicone pads that will prevent slipping and scratching of surfaces. Pillow upholstery: eco-leather.

DIMENSIONS: 42 x 16 x 12,5cm



## "CAT EYE MAGNET"

Cat eye nail design magnets. Different types available.



## MAGNETIC PALETTE FOR MIXING SHADES

A unique magnetic palette for mixing shades with 15 removable compartments. Specially adapted for manicure masters. Available with 3 different design prints.



# TOOLS



## WOODEN STICKS FOR MANICURE

Orange sticks for manicure.

AMOUNT: 10pcs/ LENGTH: 11 cm



## BRUSH FOR DUSTING OFF HANDS AND NAILS

Plastic brush, for cleaning off the nail file dust.

## TOOL BRUSH

Plastic brush for cleaning tools from dust.



## FOIL WITH COTTON PADS

Foil with cotton pads for removing gel polish.

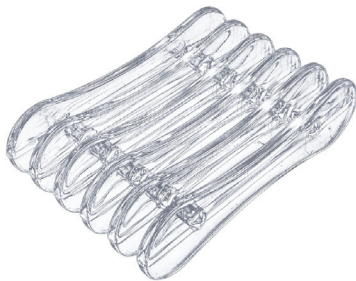
AMOUNT: 100 pcs

# TOOLS



## NANO BRUSH

Nano-brush for cleaning the hands from dust.



## BRUSH HOLDER

Transparent brush holder.



## CONTAINERS WITH NAILS COSMETICS LOGO

Transparent containers.

AMOUNT/ VOLUME: 5 pcs/ 5 ml



## SILICONE PADS

Silicone pads for ombre design.

# ACCESSORIES



## NAIL TECHNICIAN'S APRON

An apron made with high-quality, breathable material that perfectly repels dust and liquids.  
Black, with NAILS COSMETICS logo. Pocket in the front.  
One size.



## NAILS COSMETICS WOMEN'S T-SHIRT

Nail technician's t-shirt in black with NAILS COSMETICS logo. Composition: 95 % cotton, 5 % elastane.

SIZES: S/ M/ L/ XL



## NAILS COSMETICS BAG

Comfortable, elegant, durable bag with NAILS COSMETICS logo.

SIZE: 38 x 46 x 14 cm



# ACCESSORIES



## NAILS COSMETICS PEN

A metal pen in gold color, with the NAILS COSMETICS logo. Perfect for promotional events, corporate gifts, and client presents- combining functionality with excellent aesthetics.



## BRUSH ORGANIZER

Two-in-one: a case for brushes and a stand for comfortable brush storage and use.

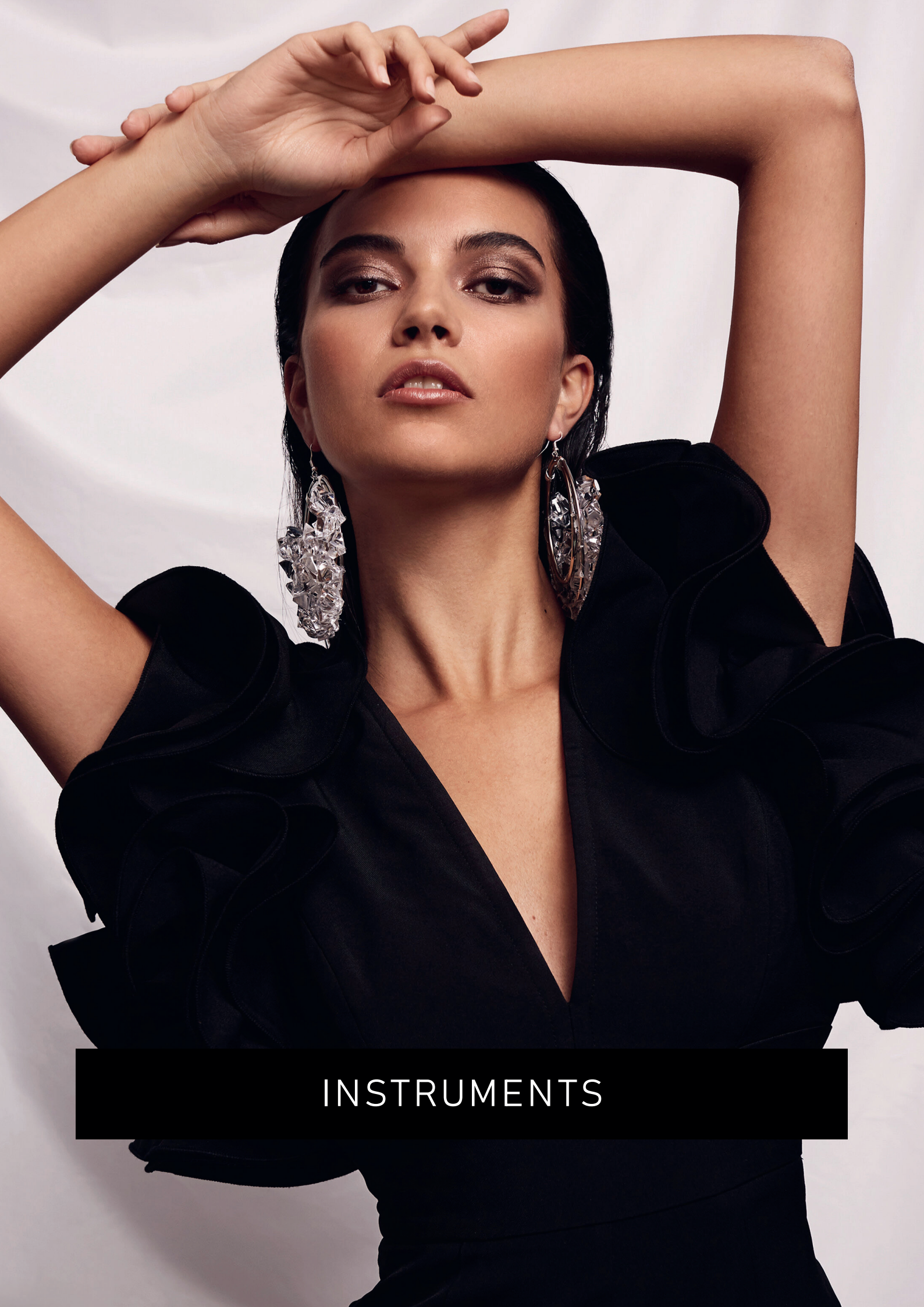


## PROFESSIONAL ACCESSORY SUITCASE

A professional case for manicure accessories.

SIZE: 25cm x 35cm x 24cm

SIZE: 69cm x 39cm x 28cm



INSTRUMENTS



# INSTRUMENTS



## NAILS COSMETICS DESIGN BRUSHES

Different types of nail design brushes:

- Art Magnetics tools
- Spatula Tool
- Fork Brush #6
- Art U Slant
- Oval #6
- Deep Smile Brush
- Art Brush #002
- Art Brush #003



## NAILS COSMETICS METALLIC GEL BRUSH

Metallic gel brush with a protective cap for working with different types of UV/LED gels. Particularly suitable for working with the cuticle area.



## NAILS COSMETICS SMALL/FINE BRUSH

Brush for creating various designs, also suitable for subcuticle coating. Available in 4 sizes.



## GEL BRUSH AND SPATULA 2 IN 1

Gel brush with spatula for working with different types of UV/LED gels.



# INSTRUMENTS



## SELF-ADHESIVE NAIL FILE "STRAIGHT"

### TYPES:

- "Straight", 12 x 13 mm, 10 pcs (240 (-2))
- "Straight", 12 x 13 mm, 10pcs (180 (-1))



## SELF-ADHESIVE NAIL FILE "HALF MOON"

### TYPES:

- "Half Moon", 27 x 178 mm, 10 pcs (100 (-1))
- "Half Moon", 27 x 178 mm, 10 pcs (180 (-2))
- "Half Moon", 27 x 48 mm, 10 pcs (240 (-3))



## METAL FILE CORES

### TYPES:

- "Straight", 12 x 13mm
- "Half Moon", 27 x 178mm

# INSTRUMENTS



## “PINK CORE COLLECTION”

### TYPES:

- File/Buffer 180/220
- Buffer 180/220
- File/Buffer 180/240
- File Pink Core 100/100
- File 80/80
- File/Buffer 180/180
- File 100/180



## “WOODEN FILE”

High-quality thin, straight wooden file.  
180/240



## BUFFERS

Disposable pink 100/180 grit buffer and long lasting purple 120 grit buffer, designed for working with natural nails, gel, or acrylic. Its ergonomic shape makes the process easier. The design provides comfortable, efficient, and safe nail filing. All NAILS COSMETICS files can be safely sterilized; they will not lose their sturdiness or shape.

# INSTRUMENTS



## **"HEAD" CUTICLE NIPPERS**

Stainless steel nippers for easy and efficient cuticle trimming.



## **NAILS COSMETICS NAIL CLIPPERS**

Stainless steel nail clippers.



## **"HEAD" PUSHER**

Stainless steel pusher for cuticles.



## **NAILS COSMETICS PUSHER**

Stainless steel pusher for cuticles. Different types.



# INSTRUMENTS



## **“HEAD” CUTICLE SCISSORS**

Stainless steel cuticle scissors.  
Features: narrow straight blade, classic blade curve,  
strong handles, soft, smooth cut.  
Left-handed scissors available.



## **NAILS COSMETICS EYEBROW TWEEZERS**

Stainless steel eyebrow tweezers.



## **NAILS COSMETICS EYEBROW TWEEZERS**

Stainless steel eyebrow tweezers.



ELECTRONIC DEVICES



# ELECTRONIC DEVICES



## HOT AIR STERILIZER

The maximum temperature of the hot air sterilizer is 250 degrees Celsius. The device can be used in beauty salons, laboratories, etc. The high temperature destroys bacteria and viruses on objects.

EXTERNAL DIMENSIONS OF STERILIZERS:  
37cm x 22cm, h – 17cm

INTERNAL DIMENSIONS OF STERILIZERS:  
24.5 cm x 11.4 cm, h – 5.5 cm



## DIGITAL ULTRASONIC STERILIZER

The digital ultrasonic device is suitable for sterilizing different tools (manicure instruments, cosmetics, jewelry, etc.). Designed both for professional and home use.

TANK CAPACITY: 2.5 liters  
SIZE: 25 x 15 x 8 cm



## TOOL DISINFECTION BOX

The plastic container is designed for sterilization of manicure and pedicure instruments, eyelash extension tools, etc. You can also sterilize nail files.



# ELECTRONIC DEVICES



## ELECTRIC NAIL DRILL "STRONG 210"

High-quality, professional, powerful, fast, convenient and safe manicure cutter for apparatus manicure, pedicure and nail correction. Device with reverse function. The set includes various spare parts for their replacement.

64W

35 000 RPM

40 000 RPM



## "HEAD" NAIL DRILL BITS

Nail drill bits for fast and efficient removal of gels and gel polishes, as well as for manicure and pedicure procedures, perfect for large toenail treatment.



## PEDICURE DISC WITH CHANGEABLE FILES

Pedicure base for changeable sanding discs. Stainless steel material, sterilizable, disinfectable.

Changeable abrasive files for pedicure discs. Self-adhesive, with good adhesion, but easy to remove. For single use.

DIAMETER: Ø 15mm/ Ø 20mm/ Ø 25mm  
GRIT: 100/ 180/ 240

# ELECTRONIC DEVICES



## DUST EXTRACTOR - ÜLKA X2F PREMIUM

New design ÜLKA X2F dust collector. Equipped with centrifugal fans that work with higher performance but less noise and lower energy consumption. Collects 100% dust. The kit includes a HEPA filter, a reusable mask and a palette. The body is made of impact-resistant plastic.

Service life: 50,000 hours.



## DUST EXTRACTOR FILTERS

Filters for manicure dust extractors ÜLKA X2F PREMIUM and AMBER mini.

# ELECTRONIC DEVICES



## MACRO LENS

MACRO LENS is especially suitable for manicure/nail photography, it will help every manicure master to create great, zoomed-in "instagram type" pictures. Taking clear images will not cause difficulties thanks to easily replaceable lenses. There are 2 types of lenses - wide-angle and macro lenses.



## EKSPRESS LED LAMP

This lamp is perfectly suitable for the trendy method of gel nail extension- express nail extension. LED lamp maximally facilitates the work during the procedure, quickly and conveniently fixes the express tip to the nail plate.

Timer: 60 sec  
Charging time: 1.5h  
Charging with a USB cable

## UV/LED LAMPS

LED and UV — 2-in-1. The design allows the product to dry evenly on the entire surface of the nail. Three times quicker polymerization (gel polishes- 30 sec, gel- 1 min). Available in different types.





# BETWEEN US NAIL TECHS

## WITH OLGU ZELTIŅA

---

[YOUTUBE.COM/OLGAZELTINA](https://www.youtube.com/olgazeltina)  
[INSTAGRAM.COM/NAI\\_SCOSMETICS](https://www.instagram.com/nai_scosmetics)

**FOLLOW  
NAILS COSMETICS  
AND ACQUIRE NEW  
SKILLS!**

- ALL ABOUT MANICURE;
- HOW TO WORK FASTER, EASIER;
- PROFESIONAL SECRETS OF WORKING  
WITH GEL POLISHES;
- NAIL DESIGN NEWS AND TRENDS!



**NAI\_S**  
c o s m e t i c s

W W W . N A I L S C O S M E T I C S . C O M

F B @ N A I S C O S M E T I C S / I N S T @ N A I \_ S C O S M E T I C S